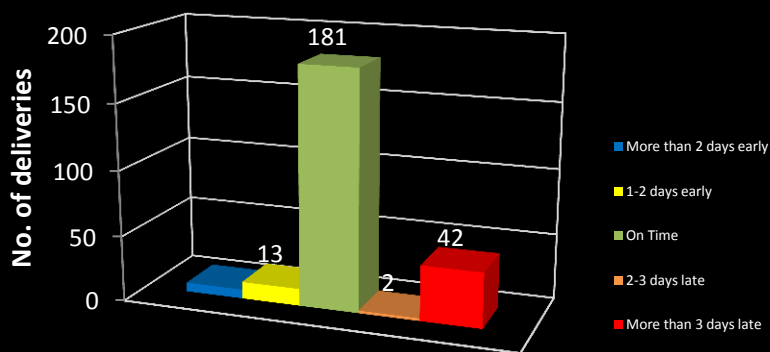


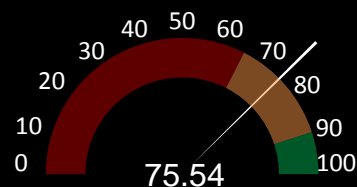
### On Time Deliveries 2011 Oct - Dec



#### On Time deliveries

More than 2 days early	7
1-2 days early	13
On Time	181
2-3 days late	2
More than 3 days late	42

### 2011 Overall performance score



Overall deliveries since May 2011: 839

Total on time: 563

Total on 5 day window: 69

Total outside delivery tolerance: 207

# CURRIE & WARNER QUALITY PERFORMANCE - 2011

## COMPLAINTS

Month	No. Of Deliveries	No. Of Complaints	Quality Performance (%)
January	230	1	99.57
February	197	0	100.00
March	194	2	98.97
April	107	0	100.00
May	194	3	98.45
June	176	2	98.86
July	191	1	99.48
August	184	3	98.37
September	179	3	98.32
October	109	1	99.08
November	181	2	98.90
December	124	1	99.19
<b>TOTALS</b>	<b>2066</b>	<b>19</b>	<b>99.08</b>

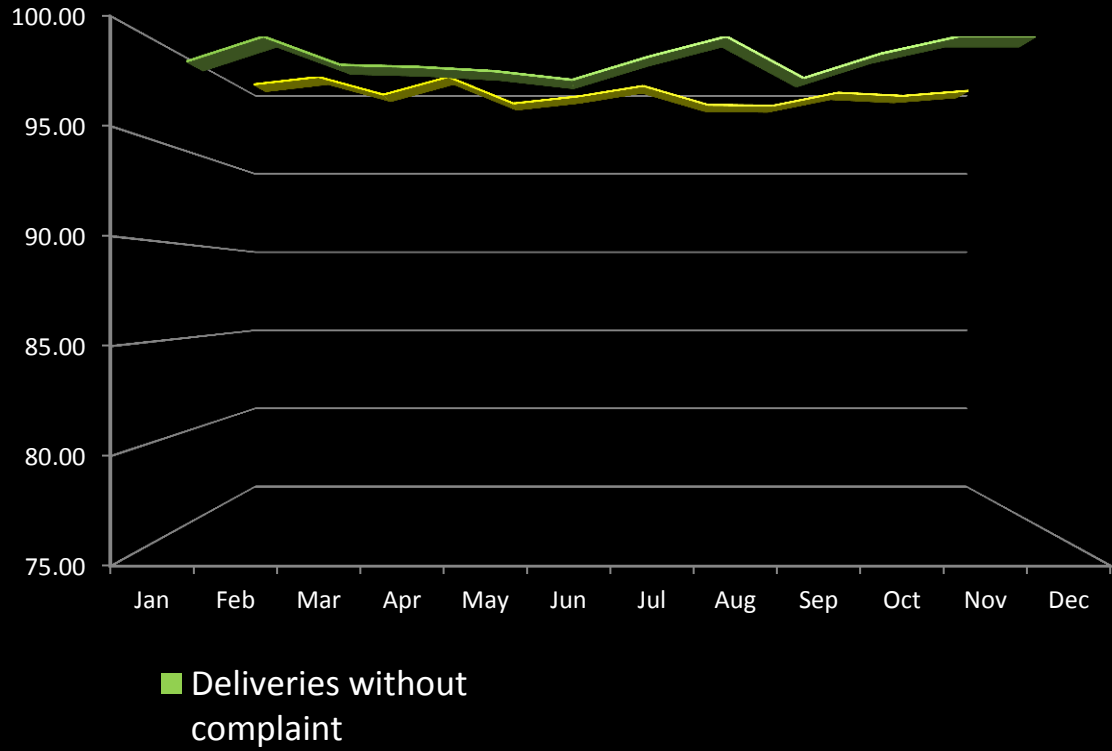
QUALITY PERFORMANCE = 100 - (No OF COMPLAINTS EXPRESSED AS A PERCENTAGE OF THE No OF DELIVERIES)

## C&W SUPPLIER PERFORMANCE (REJECTIONS)

Month	No. Of Orders Placed	No. Of Rejections	Quality Performance (%)
January	163	2	98.77
February	170	0	100.00
March	215	3	98.60
April	134	2	98.51
May	176	3	98.30
June	188	4	97.87
July	204	2	99.02
August	131	0	100.00
September	147	3	97.96
October	119	1	99.16
November	150	0	100.00
December	56	0	100.00
<b>TOTALS</b>	<b>1853</b>	<b>20</b>	<b>98.92</b>

QUALITY PERFORMANCE = 100 - (No OF REJECTIONS EXPRESSED AS A PERCENTAGE OF THE No OF DELIVERIES)

## Delivery Performane



## REJECTIONS

Month	No. Of Deliveries	No. Of Rejections	Quality Performance (%)
January	230	0	100.00
February	197	0	100.00
March	194	0	100.00
April	107	0	100.00
May	194	3	98.45
June	176	0	100.00
July	191	1	99.48
August	184	1	99.46
September	179	1	99.44
October	109	1	99.08
November	181	0	100.00
December	124	1	99.19
<b>TOTALS</b>	<b>2066</b>	<b>8</b>	<b>99.61</b>

QUALITY PERFORMANCE = 100 - (No OF REJECTIONS EXPRESSED AS A PERCENTAGE OF THE No OF DELIVERIES)

## PPM / SIGMA ANALYSIS

Month	No. of components delivered	No. of nonconforming parts rejected	Defective PPM	SIGMA Value
January	2,240,660	0	0	~
February	2,205,907	0	0	~
March	2,578,385	0	0	~
April	1,746,794	0	0	~
May	1,985,116	33,709	16,981	3.62
June	1,213,607	0	0	~
July	1,523,984	0	0	~
August	1,436,929	1,481	1,031	4.58
September	2,256,063	0	0	~
October	1,309,612	0	0	~
November	1,709,344	0	0	~
December	981,443	1,496	1,524	4.46
<b>TOTALS</b>	<b>21,187,844</b>	<b>36,686</b>	<b>1,731</b>	<b>4.42</b>

**N.B. The stated Sigma value includes a  $\pm 1.5$  sigma shift.**

# 2011 SCRAP LEAGUE TABLE

POSITION	MACHINE No.	TOTAL PARTS MADE	TOTAL PARTS SCRAP	% SCRAP
1	A13	6,172,330	56,156	0.91
2	A12	7,191,708	70,856	0.99
3	A2Y	332,894	3,778	1.13
4	A2L	283,659	3,694	1.30
5	A5A	10,082	146	1.45
6	A2B	234,117	3,526	1.51
7	A2M	475,504	7,226	1.52
8	A2D	355,622	6,420	1.81
9	A2A	435,346	8,014	1.84
10	A00	170,042	3,241	1.91
11	A2X	406,377	8,091	1.99
12	A2N	201,620	4,069	2.02
13	A08	778,135	16,477	2.12
14	A16	609,595	14,370	2.36
15	A06	593,546	14,473	2.44
16	A2F	169,255	4,346	2.57
17	A11	728,873	21,021	2.88
18	A2J	160,096	4,624	2.89
19	A2Q	214,555	6,470	3.02
20	A2H	174,446	5,302	3.04
21	A05	287,799		#VALUE!
22	A18	424,113	14,728	3.47
23	A02	472,966	16,949	3.58
24	A04	308,131	11,205	3.64
25	A2K	243,113	9,000	3.70
26	A2C	338,337	15,265	4.51
27	A10	250,204	11,419	4.56
28	A2G	278,597	12,744	4.57
29	A01	239,000	42,113	''

TOTALS

22,540,062

395,723

1.76 %

TOTAL COST OF SCRAP PARTS - 2011

£115,725.84

## Scrap League Table 2011



# "RIGHT FIRST TIME"

## 2011 FIRST OFF PASSES (%)

MONTH	No OF FIRST OFFS	No OF PASSES	% PASSES
JANUARY	50	45	90.00
FEBRUARY	46	42	91.30
MARCH	57	49	85.96
APRIL	35	32	91.43
MAY	38	32	84.21
JUNE	44	38	86.36
JULY	53	41	77.36
AUGUST	52	43	82.69
SEPTEMBER	37	27	72.97
OCTOBER	42	38	90.48
NOVEMBER	65	55	84.62
DECEMBER	31	27	87.10
<b>TOTALS</b>	<b>550</b>	<b>469</b>	<b>85.27</b>

### FIRST OFF PASSES (%)

